

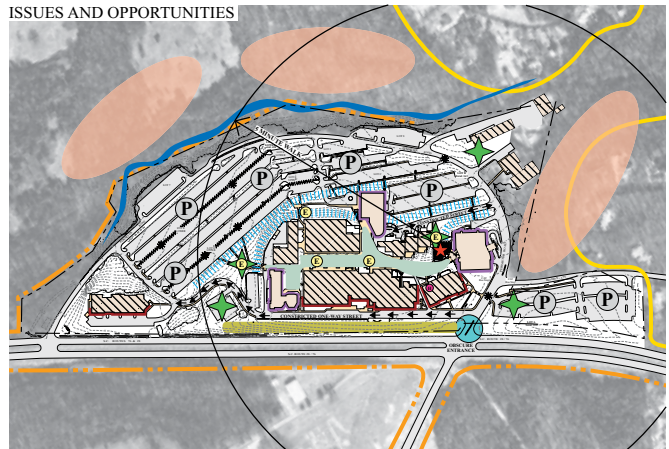
THE PROJECT

Tri-County Technical College is located in Pendleton, South Carolina. Its service area includes Anderson, Oconee and Pickens counties. The College is growing rapidly on constrained acreage. This study was focused on developing expansion plans that combine the development of satellite site(s) and subsequent redevelopment of the existing campus.

The satellite locations will target providing arts and sciences programs to students for whom the current campus is distant. Redevelopment of the existing campus will focus on adjusting facilities to better meet the College's evolving mission to serve more students planning to transfer to a four-year college and those entering high-tech career paths. The project involved campus analysis and needs assessment of current oncoming projects.

*Project completed under previous name: Dober, Lidsky, Craig and Associates, Inc.

ISSUES AND OPPORTUNITIES

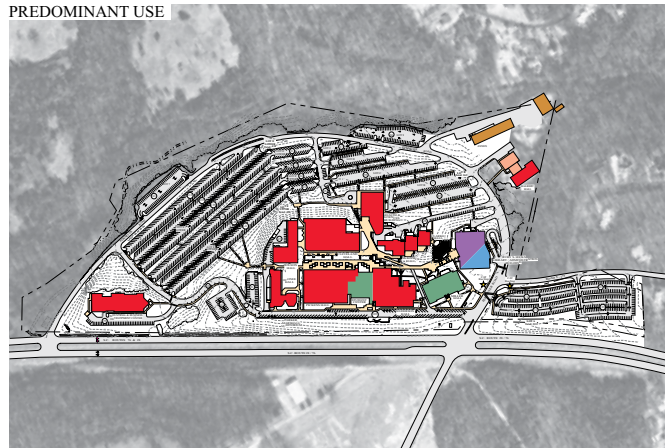


TriCounty CAMPUS PLANNING STUDIES 2005

ONE STORY BUILDING MAKE USE OPTIMAL USE OF SITE	BURN PRESENTS VISUAL BARRIER ON PARKING PLAZA DECK	PEDESTRIAN VEHICULAR CONFLICT AND/OR SPLIT-LANE CROSSING	VERTICAL CIRCULATION	DOBER, LIDSKY, CRAIG & ASSOCIATES, INC. CONSULTING ARCHITECTS/PLANNERS
HANDICAPPED ACCESSIBLE BUILDING	CAMPUS WALK PROVIDES OPTIMAL VISIBILITY	PARKING INSUFFICIENT TO SUPPORT POTENTIAL BUILDING SITE	WETLANDS POSE CHALLENGE TO BUILDING FOUNDATION	NEAL PRINCE & PARTNERS ARCHITECTS, INC.
COLLEGIATE FACADES	ADVERTISEMENTS OCCUPY PRIME SITE	POTENTIAL BUILDING SITE	CLEMSON UNIVERSITY PROPERTY	RESIDENTIAL PRECINCT
UNDISTINGUISHED FACADES PROJECT "TECHNICAL" IMAGE	CHANGE IN GRADE PRESENTS PEDESTRIAN BARRIER BETWEEN PARKING AND CAMPUS	POSSIBLE ACCENTUATE TO ACCOMMODATE GROWTH		

CONCEPT DEVELOPMENT DRAWING

PREDOMINANT USE



TriCounty CAMPUS PLANNING STUDIES 2005

ACADEMIC	LIBRARY	ROADS
ADMINISTRATION	PHYSICAL PLANT	CAMPUS WALKS
STUDENT SERVICES	SPECIAL	

DOBER, LIDSKY, CRAIG & ASSOCIATES, INC. CONSULTING ARCHITECTS/PLANNERS
NEAL PRINCE & PARTNERS ARCHITECTS, INC.
TOTAL PARKING: 1,963 Spaces
(25 Handicapped Spaces)

ANALYSIS DRAWING

REFERENCE

Wayne Fogle
Vice President, Finance and Administrative Services
864 646 1796

PRINCIPAL IN-CHARGE

George G. Mathey, AICP
Study Director



DOBER LIDSKY MATHEY
CREATING CAMPUS SOLUTIONS